



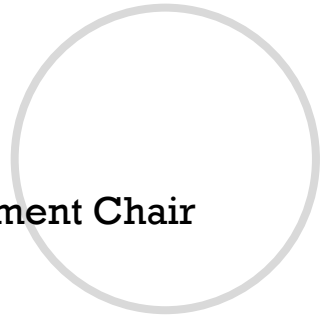
**9<sup>th</sup> Grade  
Bridge Law  
Counseling Lesson**



## Meet Your SHS School Counselors



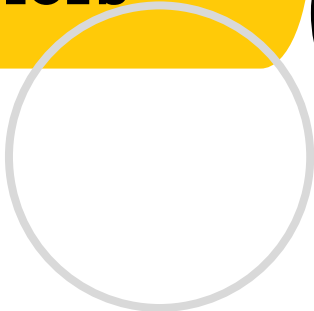
**Mrs. Lea Beshears, Department Chair**  
**Student Last Names: A – D**



**Mrs. Misty Hawk**  
**Student Last Names: E – Le**



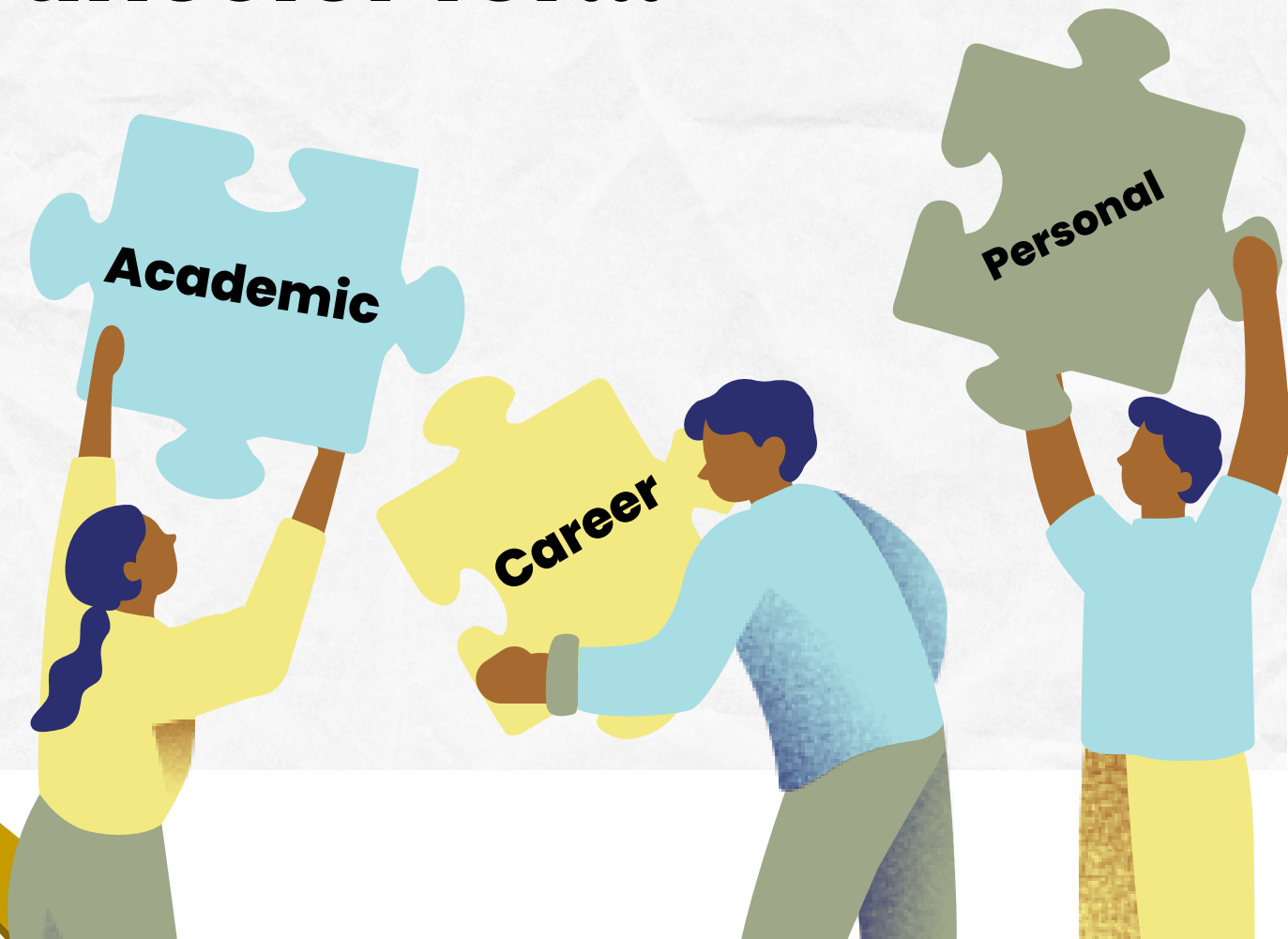
**Ms. Crystal Jordan**  
**Student Last Names: Li - Re**



**Dr. Tammy White, Dual Enrollment Coordinator**  
**Student Last Names: Rh – Z**



# You might see your School Counselor for...



# Confidentiality/Safety



## CONFIDENTIALITY

**What is said with your counselor will stay with your counselor.**

### **UNLESS:**

- **Someone is harming you**
- **You are a danger to yourself**
- **You are a danger to others**



## SAFETY

**If you are worried about a friend/peer, notify a counselor immediately.**

**(ex. suicide, alcohol, drugs, abuse, etc.)**

<https://linktr.ee/sprayberrycounseling>

**Stay  
Connected!**



[www.sprayberrycounseling.com](http://www.sprayberrycounseling.com)



@Sprayberrycounseling



@SHScounseling



<http://www.youtube.com/@sprayberrycounseling>



# Let's talk about...

- ❖ GPA
- ❖ Course Rigor
- ❖ Transcripts
- ❖ Promotion Requirements
- ❖ Graduation Requirements
- ❖ Dual Enrollment
- ❖ Your Responsibilities in the Classroom

# WHAT IS A GPA?

## Different kinds of GPA

- Weighted vs. Unweighted
- Cumulative vs. Core
- HOPE (see future slide)
- College

## Grade Point Average (GPA):

- |           |          |
|-----------|----------|
| • A = 4.0 | 90-100   |
| • B = 3.0 | 80-89    |
| • C = 2.0 | 74-79    |
| • D = 1.0 | 70-73    |
| • F = 0.0 | 69 and ↓ |

# How do I calculate a GPA?

❖ Step 1: Assign each grade a numeric value

❖ **A=4** (90-100%)

❖ **B=3** (80-89%)

❖ **C=2** (74-79%)

❖ **D=1** (70-73%)

❖ **F=0** (0-69%)

AP and Honors courses earn  
quality points  
AP = +1 quality point  
Honors = +0.5 quality point

❖ Step 2: Add all the numeric values together

❖ Step 3: Divide by the total number of credits (classes)  
attempted

# GPA Examples

## ❖ Example 1

- Algebra I – B = 3.0
- 9<sup>th</sup> Lit – A = 4.0
- Intro to Drafting – B = 3.0
- Art – B = 3.0

$$3.0 + 4.0 + 3.0 + 3.0 = 13$$

$$13/4 = 3.25 \text{ GPA}$$

## ❖ Example 2

- H Algebra – C = 2.5
- H 9<sup>th</sup> Lit – B = 3.5
- Intro to Drafting – B = 3.0
- Art – A = 4.0

$$2.5 + 3.5 + 3.0 + 4.0 = 13$$

$$13/4 = 3.25 \text{ GPA}$$

# Why take Honors and AP classes?

- ❖ Provides opportunities to improve study skills
- ❖ Familiarizes you with college level work
- ❖ Can boost your cumulative, weighted GPA
- ❖ Prepares you for big tests (ACT, SAT, EOCs)
- ❖ Gives you an advantage in college admissions
- ❖ Allows you to expand your interests
- ❖ May be eligible for college credit (AP Exam)
- ❖ Improves critical thinking skills for workforce
- ❖ BUT... you must find the right balance for YOU; don't compare yourself to others

# How Many Credits Do I need to Graduate?

| Area of Study                | Required Credits   |
|------------------------------|--|
| English/Language Arts        | <b>4 credits</b> (Lit & Comp I,II, III, & IV)                            |
| Mathematics                  | <b>4 credits</b> (Alg I, Geom, Adv Alg)                                  |
| Science                      | <b>4 credits</b> (Biology, Physics/Physical Science, Chem/Earth/Env Sci) |
| Social Studies               | <b>3 credits</b> (World, US, Gov/Econ)                                   |
| World Language/CTAE/Fine Art | <b>3 credits</b>   |
| Personal Fitness             | <b>0.5 credit</b>  |
| Health                       | <b>0.5 credit</b>  |
| Electives                    | <b>4 credits</b>   |
| <b>TOTAL CREDITS:</b>        | <b>23</b>  |

# Promotion Requirements

| Grade Level      | Required Credits   |
|------------------|--|
| 10 <sup>th</sup> | <b>5 credits</b><br>(1 credit each in core English, Math and Science)    |
| 11 <sup>th</sup> | <b>10 credits</b><br>(2 credits each in core English, Math, and Science) |
| 12 <sup>th</sup> | <b>16 credits</b><br>(on track for graduation)                           |



# Dual Enrollment



# What is Dual Enrollment?

**Dual Enrollment is a state-funded program that allows you to take college-level courses while completing your high school diploma.**

**This program pays for 100% of tuition, mandatory fees, and any required textbooks.**

**You can earn up to 30 credit hours!**



**Basically... Instead of taking a class in the high school, you can take the class at the college and earn high school credit and college credit simultaneously. For example, instead of Literature IV you can take ENGL 1101 and earn credit for Lit IV and ENGL 1101.**

Technical College System of Georgia (TCSG) have an agreement with University System of Georgia.

There are 28 courses that you can take at a GA Technical College with direct transfer credit.

All 4-year colleges have core requirements. You can complete most of these classes through DE.

List of classes: [TCSG\\_Guaranteed\\_transfer-web.pdf](#)

Ex.

ENGL 1101 instead of Literature IV; BIOL 1107 instead of 4<sup>th</sup> science

MATH 1111 instead of AMDM; HIST 2112 instead of US History

MATH 1113 instead of PreCal: ECON 1101 instead of Economics

# Dual Enrollment

## Interested in Dual Enrollment?

### STEP 1

You must complete or be scheduled in or completed Advanced Algebra

### STEP 2

Research specific requirements and application deadlines for the college you are interested in attending as a dual enrollment student.

Visit [www.Sprayberrycounseling.com](http://www.Sprayberrycounseling.com)

--> Dual Enrollment

Visit [www.Sprayberrycounseling.com](http://www.Sprayberrycounseling.com)

--> Dual Enrollment

SPRAY BERRY COUNSELING

DEADLINES & WITHDRAWS

#1 Steps to Apply...

#2 Deadline Dates for DE

#3 Forms, Rules & Instructions

#4 Steps to Complete GA Futures Funding

# Dual Enrollment

## Important things to consider...

- Will your college of interest accept these credits?
- DE vs. AP
- Full time vs. Part time participation
- Transportation to the college might be necessary
- Scheduling conflicts
  - In-school and extracurricular responsibilities
- Cobb County and College calendars are different
  - Breaks, exam dates, etc.

# Dual Achievement



**Dual Achievement program (DAP)** (established by SB 204) offers qualified students an alternate path to high school graduation. Students choose to simultaneously earn a high school diploma and two (2) Technical Certificates of Credit in a specific career pathway, a Technical Diploma\*, or a college Associate Degree\*. Students must be between the ages of 16 - 21 and have earned 6 high school credits.

#### Complete all required high school courses:

- 2 English Courses
- 2 Math Courses
- 2 Science Courses
- 2 Social Studies Courses
- 1 Health/PE



#### Complete any of the following Technical College Credentials:

- Two TCCs from the list on Page 3
- Any one Diploma Program\* from the list on page 4
- Any one Associate Degree\*

**Students interested in pursuing Dual Achievement Program should contact their high school counselor or Chatt Tech College Academy at [DAP@ChattahoocheeTech.edu](mailto:DAP@ChattahoocheeTech.edu)**

# Tips for Success in High School

## At a Minimum

- ❖ Come to school
- ❖ Be on time
- ❖ Have your materials
- ❖ Pay attention
- ❖ Complete and submit your assignments
- ❖ Find out what you missed when absent and make up work in a timely manner
- ❖ Check your grades

## Going Above and Beyond

- ❖ Review & preview notes
- ❖ Attend tutoring
- ❖ Communicate with your teachers
- ❖ Take detailed notes
- ❖ Study nightly
- ❖ Keep a calendar
- ❖ Stay organized

# WHAT IS THE HOPE SCHOLARSHIP?

- (Helping Outstanding Pupils Educationally)
  - These are scholarships that are awarded to Georgia residents who have demonstrated specific academic achievements. These scholarships assist students with paying for their tuition at any USG, TCSG, or eligible private colleges or universities in Georgia. The criteria varies for each scholarship; however, this is a great way for students to get help with paying for their post-secondary education!
- Be a U.S. Citizen or meet non-citizen requirements
  - Must be a Georgia resident for at least one year
  - Must graduate from a Georgia High School
  - Must pass 4 rigor classes
  - Must have a minimum of a 3.0 HOPE GPA upon graduation
  - Must have your SSN updated in CCSD student record

To see your HOPE GPA, visit [Gafutures.org](http://Gafutures.org)

# WHAT IS THE HOPE GRANT?

- HOPE Grants are awarded to Georgia residents who have demonstrated specific academic achievements. These scholarships assist students with paying for their tuition at any TCSG colleges in Georgia. The criteria varies for each grant; however, this is a great way for students to get help with paying for their post-secondary education!

# Naviance

Naviance is a **delivery system** and college/career search engine. We use it to communicate with you and we will use it throughout the year for various activities.

You can access Naviance from the CCSD homepage, or your school's website.



# Logging into Naviance

Go to [www.cobbk12.org](http://www.cobbk12.org)

LOGIN ▾ TRANSLATE ▾ FIND IT FAST ▾ A A A | 🔍 📄

☰ MENU

COBB SCHOOLS



SEARCH

1. LOG INTO YOUR COMPUTER/OFFICE 365
2. [WWW.COBBK12.ORG](http://WWW.COBBK12.ORG) > FIND IT FAST > NAVIANCE
3. LOG IN WITH SAML

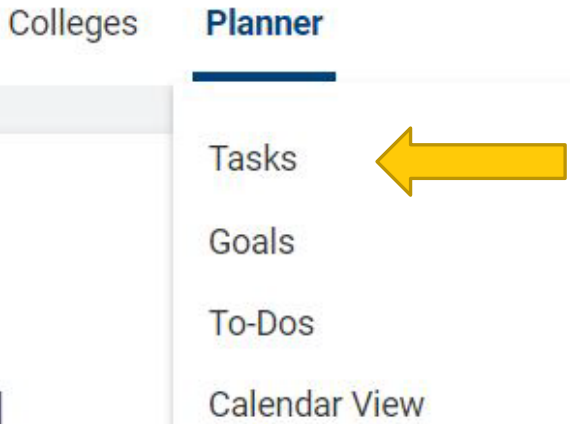


# UPDATING YOUR E-MAIL ADDRESS

- Click your Initials in the Header
- Choose “**My Account**”
- Click the **Pencil Icon/Edit** under “Contact”
- Scroll & enter your personal email address (not students.cobbk12.org)
- Press **Save**

# Locating Tasks to Complete

Click on "Home" → "Planner" → "Tasks"



## 2 Tasks to complete

1. AchieveWorks (AW) Intelligences assessment
2. 9<sup>th</sup> Grade **BRIDGE Survey**

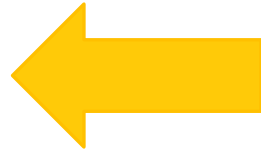
ool and sele... the path...

[← Back to Self-Discovery](#)



## AchieveWorks Intelligences®

[Start Assessment](#)



Intelligence comes in many forms. **AchieveWorks Intelligences®** helps you uncover your different intelligences and how to leverage them.

This tool will reveal the ways you deal with information, solve problems, and create things.

### How it Works



Plan to spend at least 15 minutes on this assessment.



Relax, there are no right or wrong answers.



Be honest about your abilities.



Don't be influenced by what others

# Review results related to your personality



AchieveWorks Intelligences®

COMPLETED Aug 27th 2024

Retake

Table of Contents

Summary

Previous

Next



DONE

## Your Intelligences at a Glance



Interpersonal



Linguistic



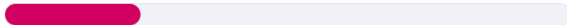
Intrapersonal



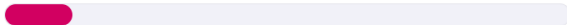
Existential



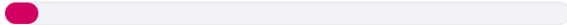
Musical



Kinesthetic



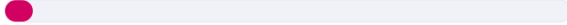
Naturalist



Logical



Spatial



these will help you know how you can play to your

## Intelligences and You

SKIP TO SUBSECTION:



### Your Superpowers



Interpersonal



This intelligence includes understanding and working with people, building relationships, seeing the world from others' point of view, communicating well verbally and non-verbally, cooperating in a group, having influence, and responding to the mood, personality and goals of others.

### STRENGTHS

- Relate well to others
- Notice and understand people's needs, perspectives, emotions and motivations
- Connect and interact with people quickly and easily
- Form and maintain lasting relationships
- Able to lead, influence and inspire others

### CHALLENGES

- Difficulty building and maintaining social relationships
- Do not notice or respond appropriately to others' feelings, motivations or behaviors
- Not good at collaborative work
- Uncomfortable interacting with people whose experiences, views and beliefs differ from own
- Don't see the humor in things that others find funny

# Explore Careers

**'Favorite' your  
top 3 career  
interests**

**(You will list 3 careers in  
the next survey and  
these may be the ones  
you want to list!)**

## Recommended Careers

Great news - there are a lot of careers that could be a good fit for you based on your results. Take a look and explore what makes you curious.



### Construction Managers

Plan, direct, or coordinate, usually through subordinate supervisory personnel, activities concerned with t...



#### Education

4 Year College



#### Median Salary

\$95,260

♥ FAVORITE



### Hydroelectric Production Managers

Manage operations at hydroelectric power generation facilities. Maintain and monitor hydroelectric plant equip...



#### Education

2 Year College



#### Median Salary

\$105,480

♥ FAVORITE

# 9<sup>th</sup> Grade Bridge Law Survey Task

1

Scroll down to  
"Tasks You Need  
to Work On"

2

Select "9<sup>th</sup>  
BRIDGE survey"

3

Answer all  
questions

4

Click "Save and  
Finish"

# Creating a GA Futures Account

[www.gafutures.org](http://www.gafutures.org)

The screenshot shows the GA Futures website homepage. At the top, the GSFSC logo (Georgia Student Finance Commission) is on the left, and navigation links for 'Create an Account', 'Sign In', and 'Help' are on the right. A red arrow points to the 'Create an Account' button. Below the navigation is a horizontal menu with categories: Home, HOPE & State Aid Programs, Federal Aid & Scholarships, College Planning, Career Exploration, Resources, About Us, and My GAFutures. The main content area features a large banner for 'CLASS OF 2026 Claim Your Spot' with a 'Learn more' button. A 'Trending' dropdown menu is open, listing items like 'GEORGIA MATCH', 'GSFAPP', '2025-2026 Award Amounts', 'Promise Scholarship', and 'Your HOPE GPA'. At the bottom, there are four colored boxes: 'GEORGIA MATCH' (blue), 'College Search' (dark blue), 'Scholarship Search' (purple), and 'Need to Chat?' (green) with a 'Quick Pay' button.

# Complete all 3 steps



## CREATE ACCOUNT

1

Step 1

2

Step 2

3

Step 3

✓

Complete

Fields marked with \* are required.

**First Name \***

**Middle Initial**

**Last Name \***

**Date of Birth \***

**Email \* ?**

**Reenter Email \***

**Alternate Email**

**Reenter Alternate Email**

Previous

Next

**\*\*Be sure to remember your username and password for future access!!**

# Elective Registration

Deadline is Friday, February 27th at 11:59pm.

- You can only submit the form ONCE
  - [Elective Registration | 2026-2027](#)
- You will select 5 electives in priority order.
  - #1 is the top elective choice, and #5 is a choice the STUDENT is willing to take if other selections are full.
    - [elective-registration-information-2026-2027.d368a7125040.pdf](#)
- What is a **Prerequisite**? These are courses that must be completed before you can take the next course.
- Courses with applications - Electives that require a completed application and approval from the noted teacher.
- You DO NOT need to choose Band, Orchestra, Chorus, ROTC if you are currently in these classes, or Weight Training if you are an athlete. Even if you registered for one or more of these classes, you should choose other electives on your form.



**THANK YOU!**